

Till-Ease

48" CULTIPACKER



OWNER'S MANUAL

With Assembly Instructions

For Model: 2148

KUNZ ENGINEERING, INC. / MENDOTA, IL 61342 / PH (815) 539-6954



SAFETY INTRODUCTION

Your safety, and the safety of others, is very important. To help you make informed decisions about safety, we have provided operating procedures and other information in this manual. This information alerts you to potential hazards that could hurt you or others.

You will find important safety information in the following form:

Safety Messages – preceded by a safety alert symbol  and one of three signal words: **DANGER**, **WARNING**, or **CAUTION**.

These signal words mean:



DANGER: Indicates an imminently hazardous situation that, if not avoided, will result in death or serious injury. This signal word is to be limited to the most extreme situations typically for machine components which, for functional purposes, cannot be guarded.



WARNING: Indicates a potentially hazardous situation that, if not avoided, could result in death or serious injury, and includes hazards that are exposed when guards are removed. It may also be used to alert against unsafe practices.



CAUTION: Indicates a potentially hazardous situation that, if not avoided, may result in minor or moderate injury. It may also be used to alert against unsafe practices.

This entire manual is filled with important safety information. Please read it carefully.

IMPORTANT SAFETY INFORMATION



CAUTION: Do not allow anyone to operate this equipment who has not fully read and comprehended the safety manual and who has not been properly trained in the safe operation of the equipment.



CAUTION: Operator should be familiar with all functions of the unit.



WARNING: Keep bystander clear while operating equipment.



WARNING: Do not allow riders.



CAUTION: Safely support and secure implement before making repairs.



CAUTION: Do not stand or climb on equipment.

This entire manual is filled with important safety information. Please read it carefully.

ASSEMBLY INSTRUCTIONS

Read the complete assembly instructions before starting the assembly.

You should have:

- one cultipacker frame assembly
- two tongue flats
- two wheel assemblies

ASSEMBLY OF TONGUE AND WHEELS (See Figure 1)



CAUTION: Step 1 should be performed with caution. Care should be taken to prevent back injuries or other lifting related injuries.

1. Remove the crate from around the cultipacker parts. Carefully lower the main cultipacker frame off of the pallet and onto the ground. You should notice that one of the tongue flats already has the tongue brace and tongue clevis attached. Remove the 1/2" x 3-1/2" bolt and lock nut holding the tongue clevis in place. Loosen the bolt holding the tongue brace but do not remove. Also remove all of the unused 3/8" x 1" bolts, lock washers and nuts on both tongue flats.
2. Attach the two tongue flats to the cultipacker frame using the hardware previously removed. Be sure to place the tongue flats on the frame so that the wheel axles are to the rear. (See Figure 1) Do not tighten the bolts in this step.
3. Align the tongue flats so that the tongue clevis can be held in place by the 1/2" x 3-1/2" bolt and lock nut that was removed in step 1. Install the 1/2" x 3-1/2" bolt and lock nut. Snug up the lock nut so the tongue clevis is free to pivot. Tighten the four bolts holding the tongue flats to the frame.

Note: Do not over-tighten the tongue clevis. The tongue clevis will function better if it is allowed to pivot.

4. Center the tongue brace between the two tongue flats and secure with the 3/8" x 1" bolts, flat washers, lock washers and nuts. Tighten bolts.
5. Remove the cotter pins on the wheel shafts located at each end of the cultipacker frame. Also remove one flat washer off of each end and leave one flat washer on each shaft. Install a wheel assembly on each shaft. Place a washer and cotter pin on each shaft and fully bend the cotter pin to prevent accidental removal.

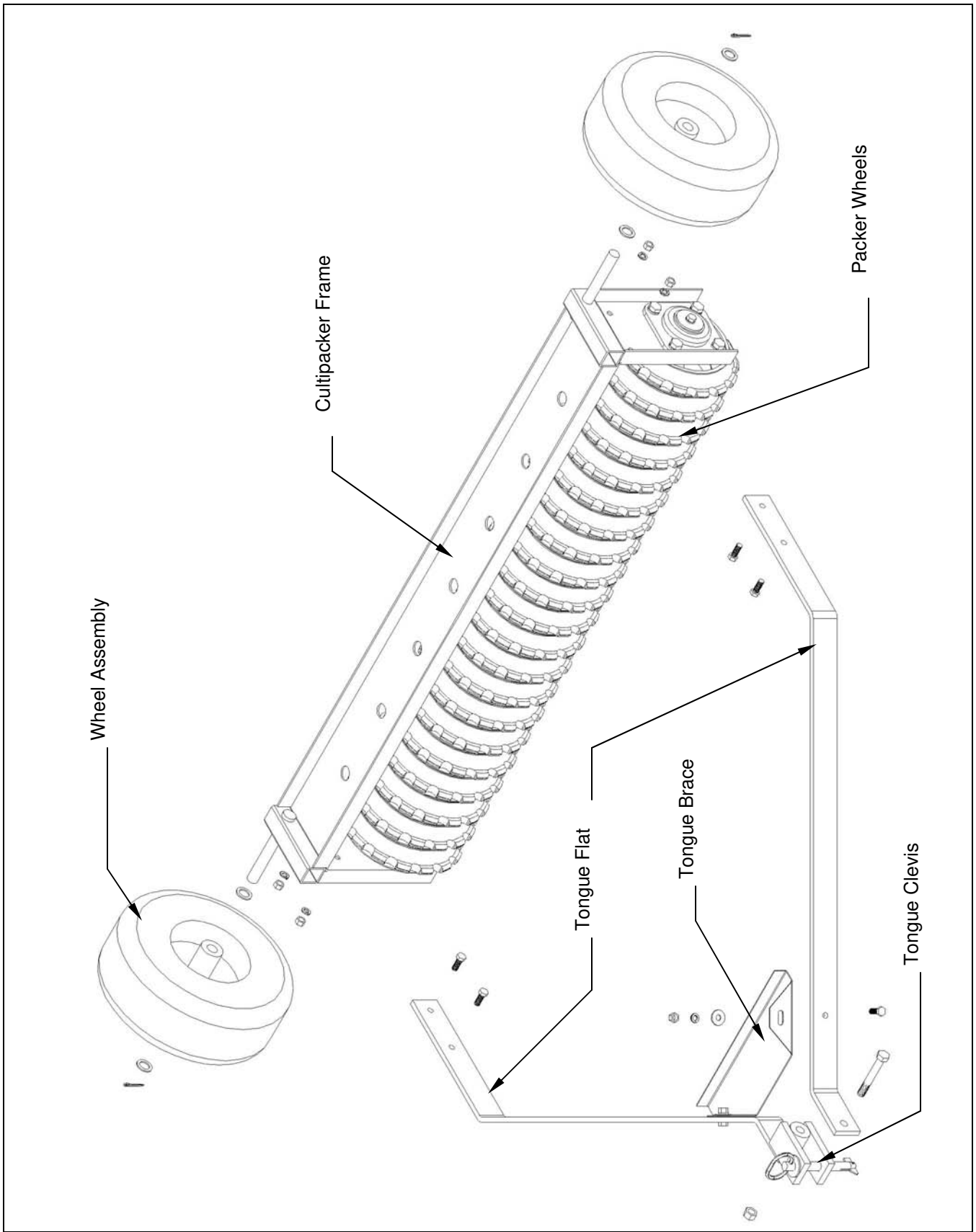


Figure 1. – Tongue and Wheel Assembly

OPERATIONS AND MAINTENANCE



This safety alert symbol is used to indicate safety instructions. Follow these instructions to avoid personal injury and/or property damage. Read and follow all instructions in this manual.



CAUTION: Do not allow anyone to operate this equipment who has not fully read and comprehended the safety manual and who has not been properly trained in the safe operation of the equipment.



CAUTION: Operator should be familiar with all functions of the unit.



WARNING: Keep bystander clear while operating equipment.



WARNING: Do not allow riders.



CAUTION: Safely support and secure implement before making repairs.



CAUTION: Do not stand or climb on equipment.

A. USING THE TOOL

This tool has been designed to flip over for use or transport.



CAUTION: Care should be taken when flipping the cultipacker over for either use or transport. Place one foot on the cultipacker frame and securely hold when flipping. Improper flipping can result in bodily injury and/or property damage.

This tool has also come equipped with a weight rack. In certain conditions it may be necessary to add additional weight. It is not recommended to add over 100 lbs of additional weight.

For best results it may be necessary to pack the soil before seeding and then pack the soil a second time after seeding.

B. MAINTENANCE

There are two grease points on the cultipacker. There is a bearing on each end of the packer wheel shaft. It is recommended that these bearings be greased at least every 4 hours. In dusty conditions more frequent greasing may be necessary.

MODEL 2148 PARTS LIST

<u>Item</u>	<u>Part #</u>	<u>Description</u>	<u>Quantity</u>
1	214009	Flat Washer (13/32" I.D. x 2" O.D.)	2
2	214026	Flat Washer (1-7/8" I.D.)	2
3	216012	Tension Lock Pin (5/8" Dia. x 3-1/2" Long)	1
4	226001	Offset Wheel Assy., Pneumatic Turf Tread 2 Ply (13/500 x 6)	2
5	243011	Riveted Flange Bearing Assy. (1-3/4" Round)	2
6	259007	Packer Wheel (1-3/4" Shaft, 9-1/2" Dia.)	21
7	275018	Till-Ease Name Decal	2
7	275019	Kunz Decal	1
8	500046	Tongue Flat	2
9	500048	Shaft	1
10	500049	Tongue Brace	1
11	800014	Frame Assy.	1
12	800018	Tongue Clevis	1

MODEL 2148 PARTS

