

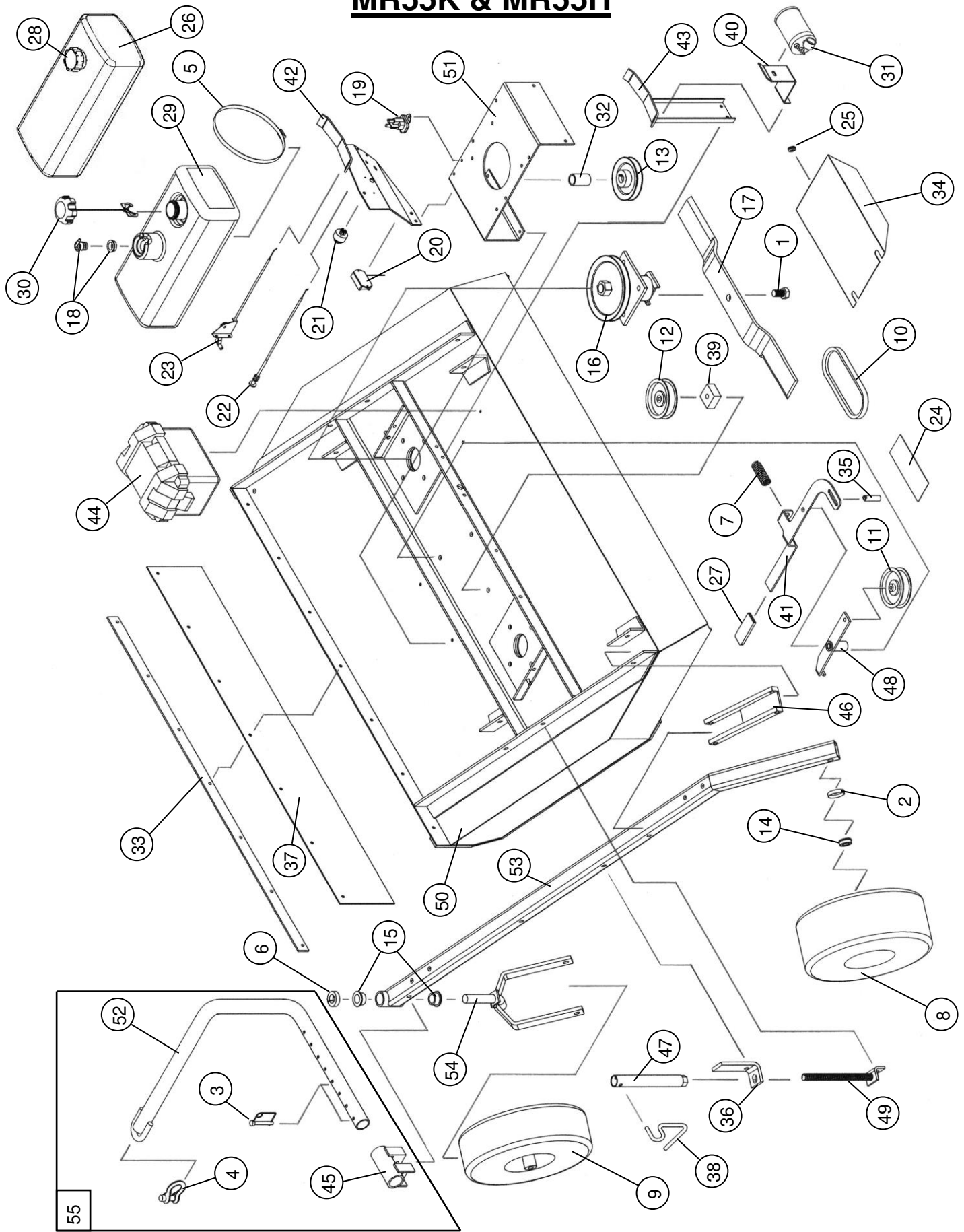
MODELS MR55T, MR55B(17HP-23HP), MR55K & MR55H

(See drawings below for additional parts)

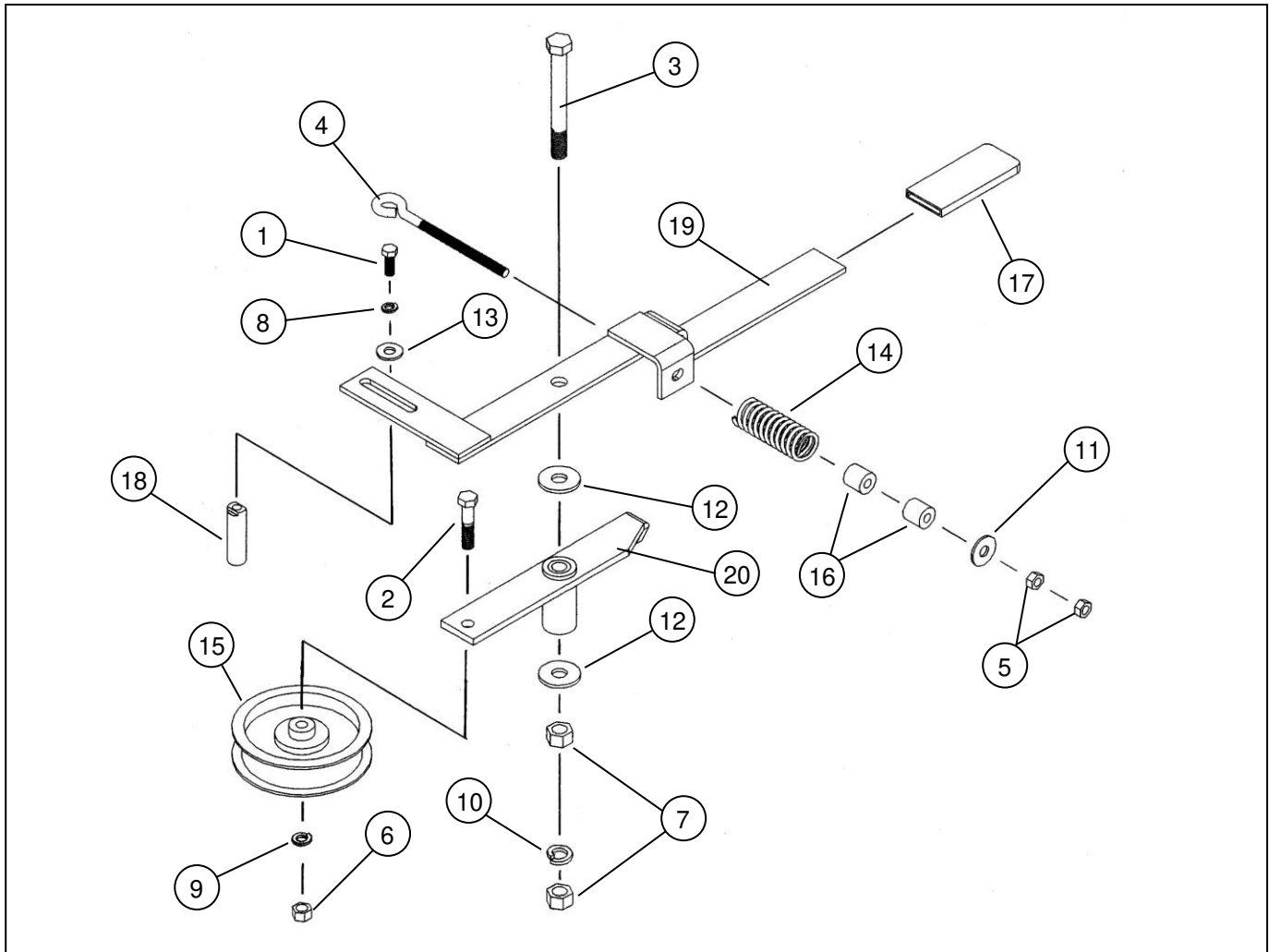
Item	Part #	Description	Qty.
1	202141	Blade Bolt (3/4"-16NF x 1-1/4")	2
2	214021	Cup Washer (For Smaller 1-3/8" O.D. Bearing)	6
2	214030	Cup Washer (For Larger 2" O.D. Bearing)	6
3	216002	Wire Lock Pin, .31" x 2.50"	2
4	216009	Screw Pin Shackle Clevis	1
5	222005	Worm Drive Hose Clamp (7-7/8" to 9-1/8" Clamping Dia.)	2
6	222012	Single Split Collar (1" I.D. x 1/2" Thick)	2
7	225003	Compression Spring, 3" Long x 1-3/32" O.D. x .135" Wire dia. (Clutch Drawing Below)	1
7	225005	Compression Spring, 4.50" Long x 1-3/32" O.D. x .125" Wire dia. (Clutch Drawing Below)	1
8	226012	Offset Wheel Assy. (15/600 x 6, 4 Ply Turf) (See Wheel Assy. Drawing Below)	2
9	226013	Centered Wheel Assy. (5.30/4.50 x 6, 4 Ply Stud) (See Wheel Assy. Drawing Below)	2
10	238004	"V" Belt, .62" x 95.9" O.C.	1
11	241001	Flat Idler, 4" O.D. x 3/8" Hole (Replaced with Steel)	1
12	241009	Flat Idler (Steel), 4" O.D. x 1/2" Hole	1
13	241010	"V" Sheave, 5" Dia. 1" Bore (Replaces 241006)	1
14	243007	Precision Sealed Wheel Bearings (1-3/8" O.D. x 5/8" I.D.)	8
14	243015	Precision Sealed Wheel Bearings (2" O.D. x 1" I.D.)	8
15	243010	Plastic Bearing (1-3/8" O.D. x 1.00" I.D., Flange, Nylon)	4
16	258015	Spindle Assy. (See Spindle Drawing Below)	2
16	258022	Spindle Assy. (See Spindle Drawing Below)	2
17	259002	Offset Mower Blade, 2-1/2" Wide, 30" Long, 3/4" Hole	2
18	260004	Roll-Over / Fuel Vapor Valve (Includes Gromet)	1
19	264000	Solenoid (Only on Models MR55B (17HP-23HP) & MR55T) (Replaces 264002)	1
20	264003	Hour/Tach Meter (Optional) (Standard on MR55H)	1
21	264010	Ignition Switch (7 Spade) (Pre 2007 Models Require 264001 (5 Spade))	1
21	264001	Ignition Switch (5 Spade) (Can be Upgraded to 264010 with Conversion Plug)	1
22	269000	Choke Control, 20" (Model MR55B (17HP-19.5HP) & MR55T)	1
22	269007	Choke Control, 22.5" (Model MR55K & MR55H)	1
22	269010	Choke Control, 27" (Model MR55B (22HP-23HP))	1
23	269001	Throttle Control, 15" (Model MR55B (17HP-19.5HP) & MR55T)	1
23	269008	Throttle Control, 46" (Model MR55K)	1
23	269009	Throttle Control, 27" (Model MR55B (22HP-23HP) & MR55H)	1
24	275001	Control Panel Decal, Starting Instructions	1
24	275002	Warning Decal General	1
24	275003	Danger Decal, Cut Finger	2
24	275011	Clutch Engagement Decal	1
24	275007	Warning Decal, Belt Shield	2
24	275019	Name Decal, Kunz	1
24	275021	Name Decal, AcrEase (Replaces 257009 & 257017)	1
24	275022	Name Decal, 57" Rough Cut	1
25	277002	Rubber Gromet	6
26	277010	Fuel Tank, 3-3/4 Gal. Plastic (Replace with 277034 and Use 277013)	~
	277041	Fuel Tank Grommet (Bottom Petcock Location)	1
27	277011	Handle Grip	1
28	277013	Gas Cap - Venting Style (For Fuel Tank 277010 and with Fuel Tank 277035 Without Vent Hose)	1
29	277034	Fuel Tank, 3 Gal. (Replaces Fuel Tank 277010)	1
		<i>Note: Fuel Tank 277034 is an EPA Certified Component . Only Replace with Fuel Tank 277034.</i>	
	277041	Fuel Tank Grommet (Bottom Petcock Location)	1
29	277040	Fuel Tank, 3 Gal. , 3-Layer (Used on 2013 Models and Newer)	1
		<i>Note: Fuel Tank 277040 is an EPA Certified Component . Only Replace with Fuel Tank 277040.</i>	
	277041	Fuel Tank Grommet (Bottom Petcock Location)	1

<u>Item</u>	<u>Part #</u>	<u>Description</u>	<u>Qty.</u>
30	277035	Gas Cap - Audible Click/Tethered, Non-Venting (Only Use with Fuel Tanks with Vent Hose) <i>Note: Gas Cap 277035 is an EPA Certified Component . Only Replace with Gas Cap 277035.</i>	1
31	277036	Carbon Canister - 300cc (California Only) <i>Note: Canister 277036 is an EPA Certified Component . Only Replace with Canister 277036.</i>	1
32	600071	Spacer, 1.38" O.D. x 1.33" Wall x 2.19" Long (MR55B (17HP-23HP), MR55T & MR55H)	1
32	600173	Spacer, 1.38" O.D. x 1.33" Wall x 2.25" Long (MR55K)	1
33	600126	Flap Retainer Strip	1
34	600133	Belt Sheild (Same Sheild Used on Both Sides)	2
35	600136	Brake Stud	1
36	600142	Upper Pivot Support	2
37	600143	Safety Belting	1
38	600146	Crank Arm (Includes Press-on Nut)	2
39	600189	Idler Spacer Block	1
40	600290	Canister Support (California Only)	1
41	600294	Clutch Arm (Replaces 900063) (Clutch Drawing Below)	1
42	600305	Control Panel (Replaces 900023)	1
43	600306	Tank Support (Replaces 900079)	1
44	900049	Battery Box Assy.	1
	264004	Battery (12V AGM Sealed)	1
45	900058	Hitch Pivot	1
46	900061	Pivot Arm	4
47	900062	Height Adjust Nut	2
48	900065	Idler Arm Assy. (Includes Bronze Bearings) (Clutch Drawing Below)	1
	243005	Bronze Bearing, 1/2" I.D. x 3/4" O.D. x .75" Long (Requires 2)	2
48	900193	Idler Arm Assy. (Includes Bronze Bearings) (5/8" Bore) (Clutch Drawing Below)	1
	243016	Bronze Bearing, 5/8" I.D. x 3/4" O.D. x .75" Long (Requires 2)	2
49	900066	Screw Adjuster	2
50	900069	Mower Deck (Call to Order)	1
51	900071	Engine Support Bracket (Model MR55B (17HP-19.5HP & MR55T)(Replace with 600172)	~
51	600172	Engine Support Bracket (Model MR55K, MR55B (22HP-23HP) & MR55H)	1
52	900082	Tongue	1
53	900106	Carrier Arm (Replaces 900072 & 900095, Also Requires Two of 243010)	2
54	900148	Caster Fork (Includes 1" Washers) (Replaces Caster Fork 900073, Also Requires 222012)	2
55	900083	ATV Tongue Assy. (Includes all Mounting Hardware and Pins)	1

PARTS DRAWING FOR MODELS MR55T, MR55B(17HP-23HP), MR55K & MR55H



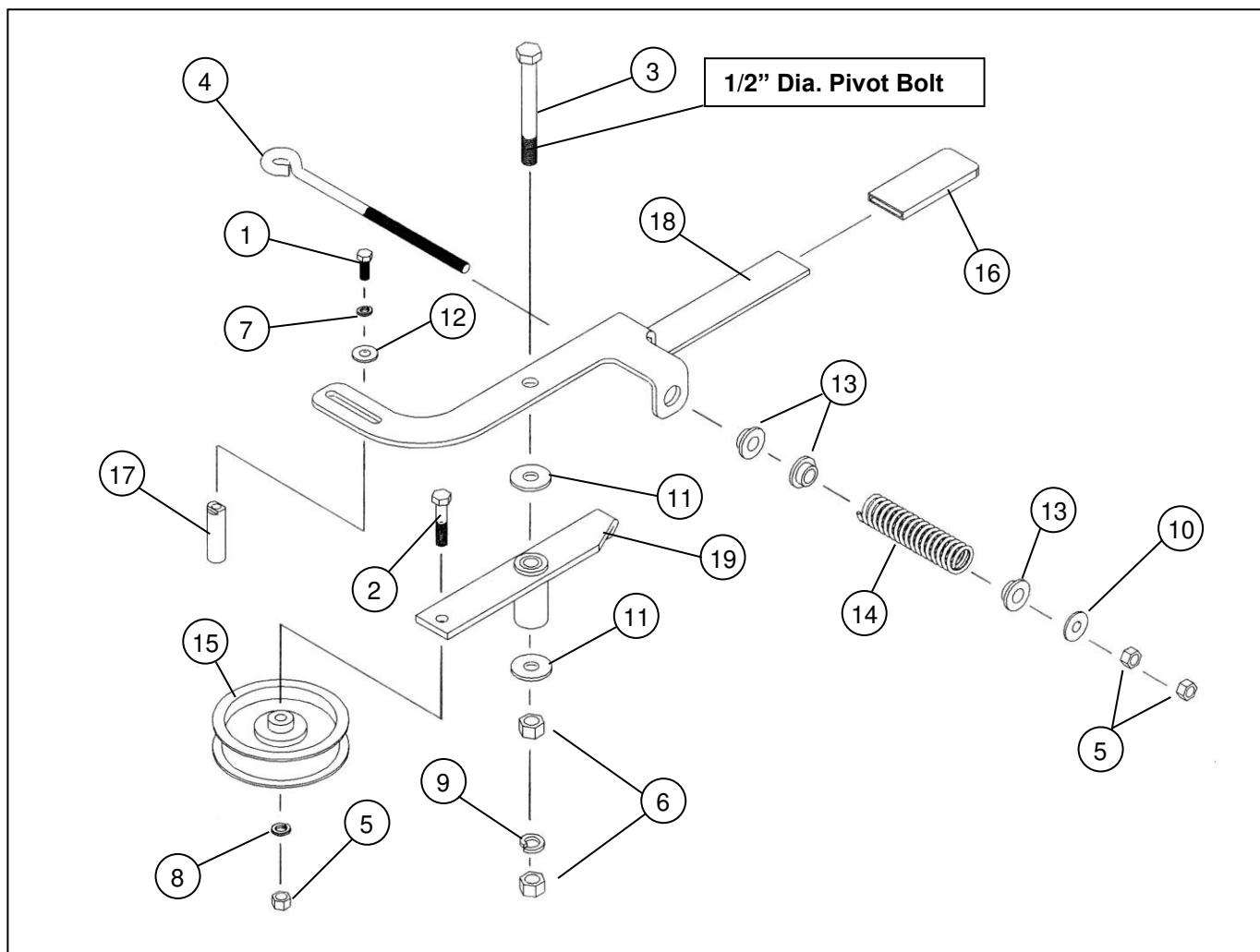
CLUTCH BLADE ENGAGEMENT PARTS - (3" SPRING VERSION)



Item	Part #	Description	Qty.
1	202019	Hex Head Bolt 5/16" x 3/4" Long	1
2	202041	Hex Head Bolt 3/8" x 1-3/4" Long	1
3	202150	Hex Head Bolt 1/2" x 4-1/4" Long	1
4	204005	Eye Bolt 5/16" x 5" Usable Length	1
5	212001	Hex Nut 5/16"	2
6	212002	Hex Nut 3/8"	1
7	212003	Hex Nut 1/2"	2
8	214001	Lock Washer 5/16"	1
9	214002	Lock Washer 3/8"	1
10	214003	Lock Washer 1/2"	1
11	214005	Standard Flat Washer 3/8"	1
12	214006	Standard Flat Washer 1/2" (Replaces All Other Washers in this Location)	2
13	214017	Standard Flat Washer 5/16"	1
14	225003	Compression Spring, 3" Long x 1-3/32" O.D. x .135" Wire dia.	1
15	241001	Flat Idler, 4" O.D. x 3/8" Hole (Replaced with Steel)	1
16	277004	Tube Spacer - Nylon 3/4" Long	2
17	277011	Handle Grip	1
18	600136	Brake Stud	1
19	900063	Clutch Arm (Upgrade to 600294, Shown on Next Drawing)	~
20	900065	Idler Arm Assy. (Includes Bronze Bearings)	1
	243005	Bronze Bearing, 1/2" I.D. x 3/4" O.D. x .75" Long (Requires 2)	2

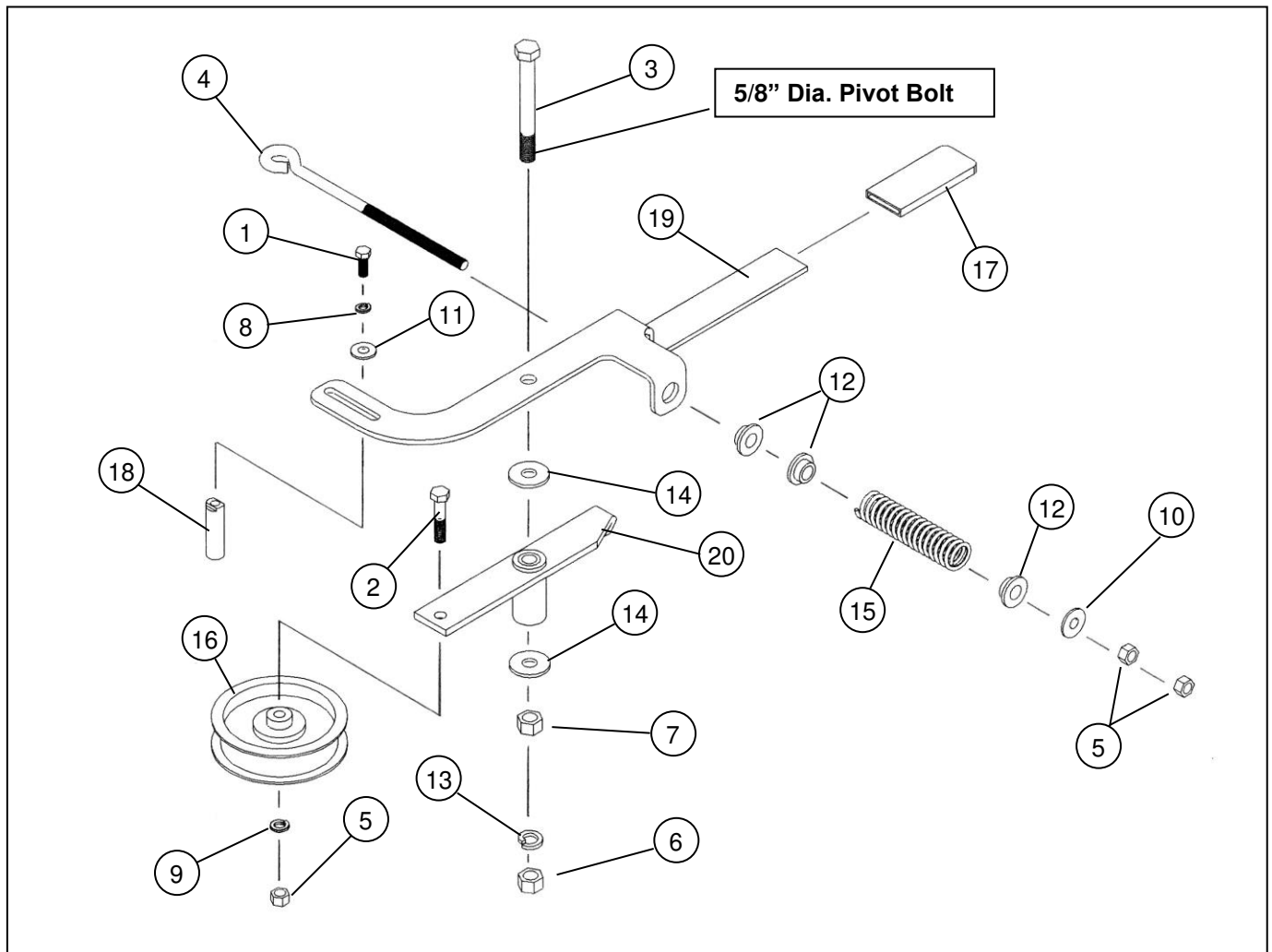
CLUTCH BLADE ENGAGEMENT PARTS

(4.5" SPRING VERSION WITH 1/2" DIA. PIVOT BOLT)



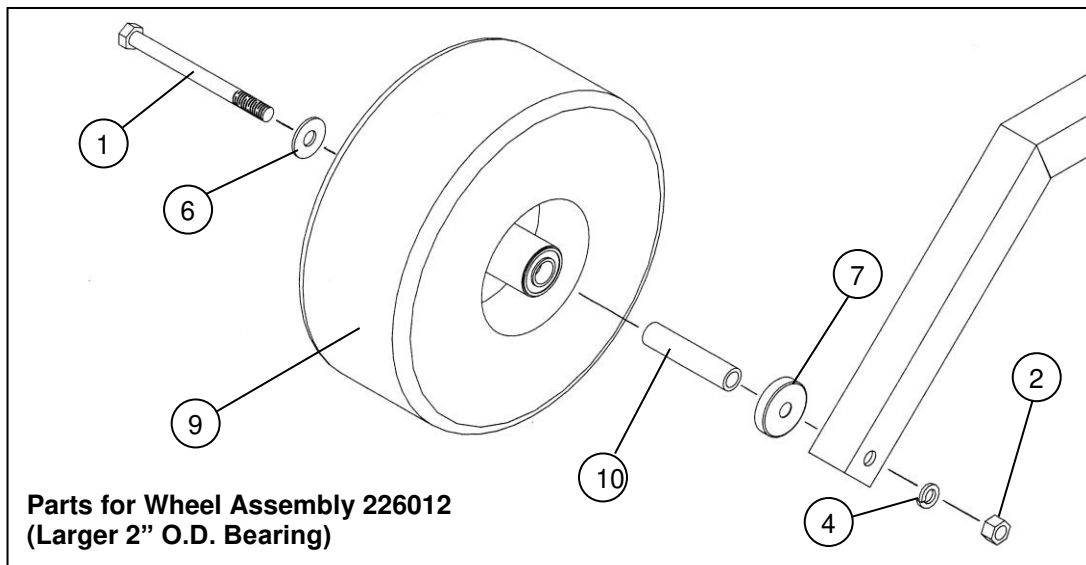
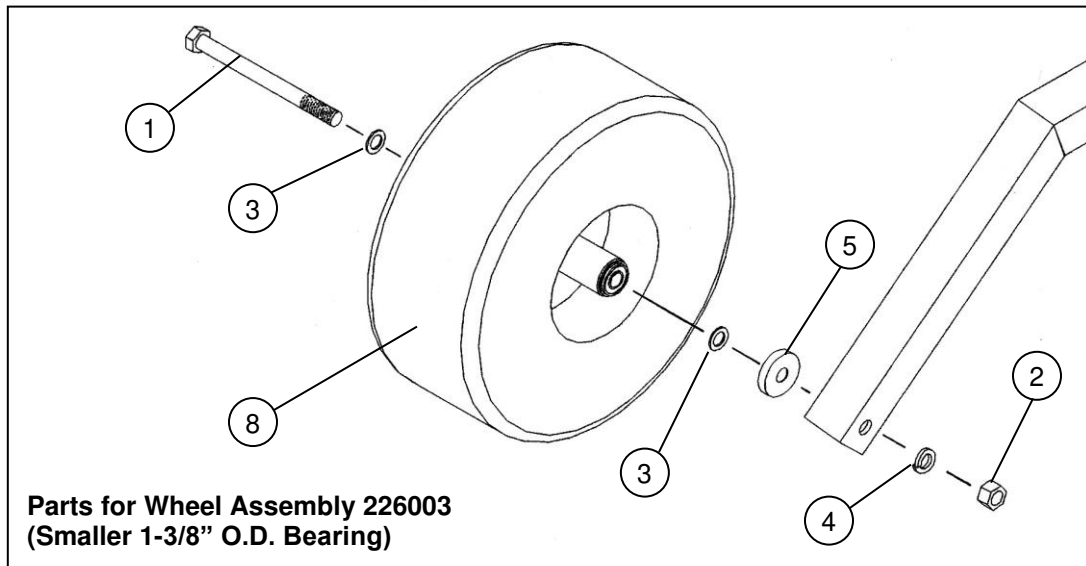
<u>Item</u>	<u>Part #</u>	<u>Description</u>	<u>Qty.</u>
1	202019	Hex Head Bolt 5/16" x 3/4" Long	1
2	202041	Hex Head Bolt 3/8" x 1-3/4" Long	1
3	202150	Hex Head Bolt 1/2" x 4-1/4" Long	1
4	204016	Eye Bolt 3/8" x 8" Usable Length	1
5	212002	Hex Nut 3/8"	3
6	212003	Hex Nut 1/2"	2
7	214001	Lock Washer 5/16"	1
8	214002	Lock Washer 3/8"	1
9	214003	Lock Washer 1/2"	1
10	214005	Standard Flat Washer 3/8"	1
11	214006	Standard Flat Washer 1/2" (Replaces All Other Washers in this Location)	2
12	214017	Standard Flat Washer 5/16"	1
13	214027	Shoulder Washer - Nylon	3
14	225005	Compression Spring, 4.50" Long x 1-3/32" O.D. x .125" Wire dia.	1
15	241001	Flat Idler, 4" O.D. x 3/8" Hole (Replaced with Steel)	1
16	277011	Handle Grip	1
17	600136	Brake Stud	1
18	600294	Clutch Arm (Replaces 900063)	1
19	900065	Idler Arm Assy. (Includes Bronze Bearings)	1
	243005	Bronze Bearing, 1/2" I.D. x 3/4" O.D. x .75" Long (Requires 2)	2

CLUTCH BLADE ENGAGEMENT PARTS **(4.5" SPRING VERSION WITH 5/8" DIA. PIVOT BOLT)**



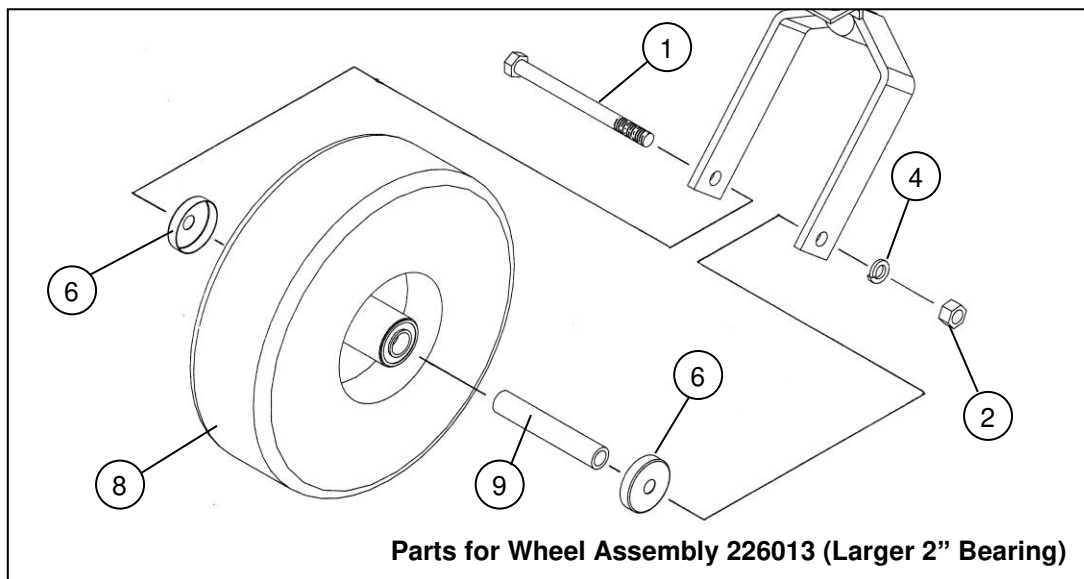
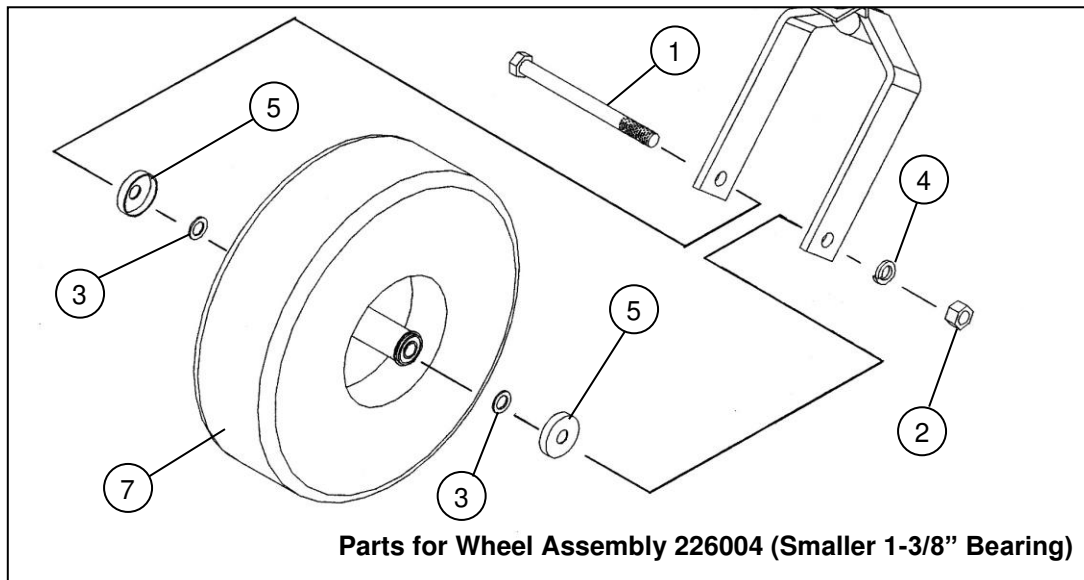
<u>Item</u>	<u>Part #</u>	<u>Description</u>	<u>Qty.</u>
1	202019	Hex Head Bolt 5/16" x 3/4" Long	1
2	202041	Hex Head Bolt 3/8" x 1-3/4" Long	1
3	202151	Hex Head Bolt 5/8" x 4-1/2" Long	1
4	204016	Eye Bolt 3/8" x 8" Usable Length	1
5	212002	Hex Nut 3/8"	3
6	212013	Hex Nut 5/8"	1
7	212021	Hex Jam Nut 5/8"	1
8	214001	Lock Washer 5/16"	1
9	214002	Lock Washer 3/8"	1
10	214005	Standard Flat Washer 3/8"	1
11	214017	Standard Flat Washer 5/16"	1
12	214027	Shoulder Washer - Nylon	3
13	214020	Lock Washer 5/8"	1
14	214029	Standard Flat Washer 5/8"	2
15	225005	Compression Spring, 4.50" Long x 1-3/32" O.D. x .125" Wire dia.	1
16	241001	Flat Idler, 4" O.D. x 3/8" Hole (Replaced with Steel)	1
17	277011	Handle Grip	1
18	600136	Brake Stud	1
19	600294	Clutch Arm (Replaces 900063)	1
20	900193	Idler Arm Assy. (Includes Bronze Bearings) (5/8" Bore)	1
	243016	Bronze Bearing, 5/8" I.D. x 3/4" O.D. x .75" Long (Requires 2)	2

REAR WHEEL ASSEMBLIES AND MOUNTING PARTS



Item	Part #	Description	Qty.
1	202140	Hex Head Bolt 5/8" x 7.5"	2
2	212013	Hex Nut - 5/8"	2
3	214018	Machinery Washer 5/8" I.D. x 1" O.D.	4
4	214020	Lock Washer - 5/8"	2
5	214021	Cup Washer (For Smaller Bearing)	2
6	214029	Standard Flat Washer - 5/8"	2
7	214030	Cup Washer (For Larger Bearing)	2
8	226003	Offset Wheel Assy. (15/600 x 6, 4 Ply Turf) (Replace with 226012)	~
	226006	Tire - Replacement (15/600 x 6, 4 Ply Turf)	2
	243007	Precision Sealed Wheel Bearings (1-3/8" O.D. x 5/8" I.D.)	4
		Note: See the Miscellaneous Parts Section Below for Flatproof Tire Options.	
	600301	Wheel Bearing Spacer (Used on 226003 & 226008)	2
9	226012	Offset Wheel Assy. (15/600 x 6, 4 Ply Turf) (Includes Tire, Rim, Bearing & Spanner Tube)	2
	226006	Tire - Replacement (15/600 x 6, 4 Ply Turf)	2
	243015	Precision Sealed Wheel Bearings (2" O.D. x 1" I.D.)	4
		Note: See the Miscellaneous Parts Section Below for Flatproof Tire Options.	
10	600308	Spanner Tube	2

FRONT WHEEL ASSEMBLIES AND MOUNTING PARTS

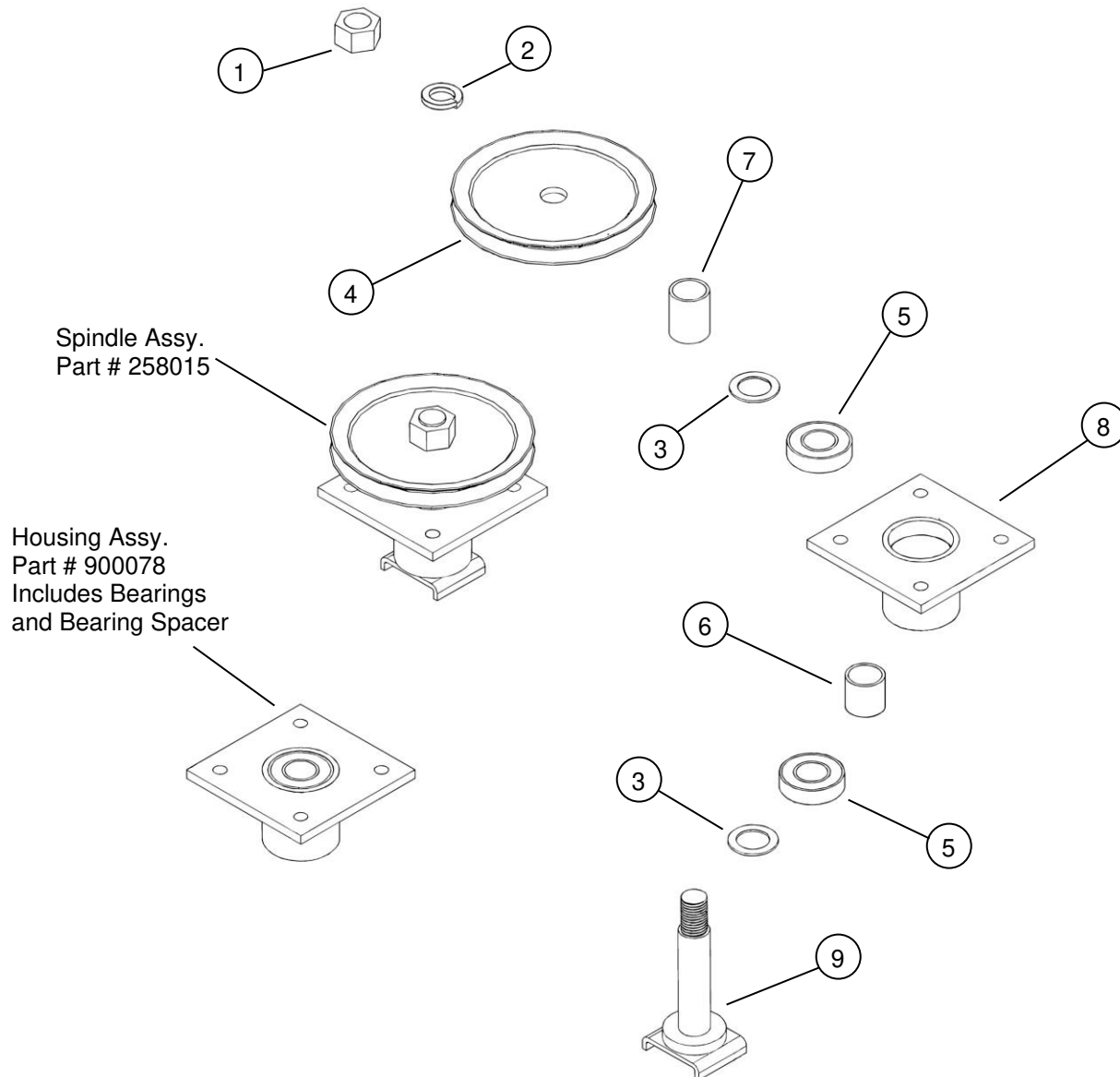


Item	Part #	Description	Qty.
1	202140	Hex Head Bolt 5/8" x 7.5"	2
2	212013	Hex Nut - 5/8"	2
3	214018	Machinery Washer 5/8" I.D. x 1" O.D.	4
4	214020	Lock Washer - 5/8"	2
5	214021	Cup Washer (For Smaller Bearing)	4
6	214030	Cup Washer (For Larger Bearing)	4
7	226004	Centered Wheel Assy. (5.30/4.50 x 6, 4 Ply Stud) (Replace with 226013)	~
	226005	Tire - Replacement (5.30/4.50 x 6, 4 Ply Stud)	2
	243007	Precision Sealed Wheel Bearings (1-3/8" O.D. x 5/8" I.D.)	4
		Note: See the Miscellaneous Parts Section Below for Flatproof Tire Options.	
	600302	Wheel Bearing Spacer (Used on 226004 & 226009)	2
8	226013	Centered Wheel Assy. (5.30/4.50 x 6, 4 Ply Stud) (Includes Tire, Rim, Bearings & Spanner Tube)	2
	226005	Tire - Replacement (5.30/4.50 x 6, 4 Ply Stud)	2
	243015	Precision Sealed Wheel Bearings (2" O.D. x 1" I.D.)	4
		Note: See the Miscellaneous Parts Section Below for Flatproof Tire Options.	
9	600309	Spanner Tube	2

PARTS BREAKDOWN FOR ROUGH CUT SPINDLE ASSY.

(PART # 258015)

Note: Models with serial #'s ranging from (ignore the first two digits) xx00119 to xx07324 were originally built with Spindle Assy. Part # 258015. Models with serial #'s ranging from (ignore the first two digits) xx08001 and greater were built with Spindle Assy. Part # 258022.

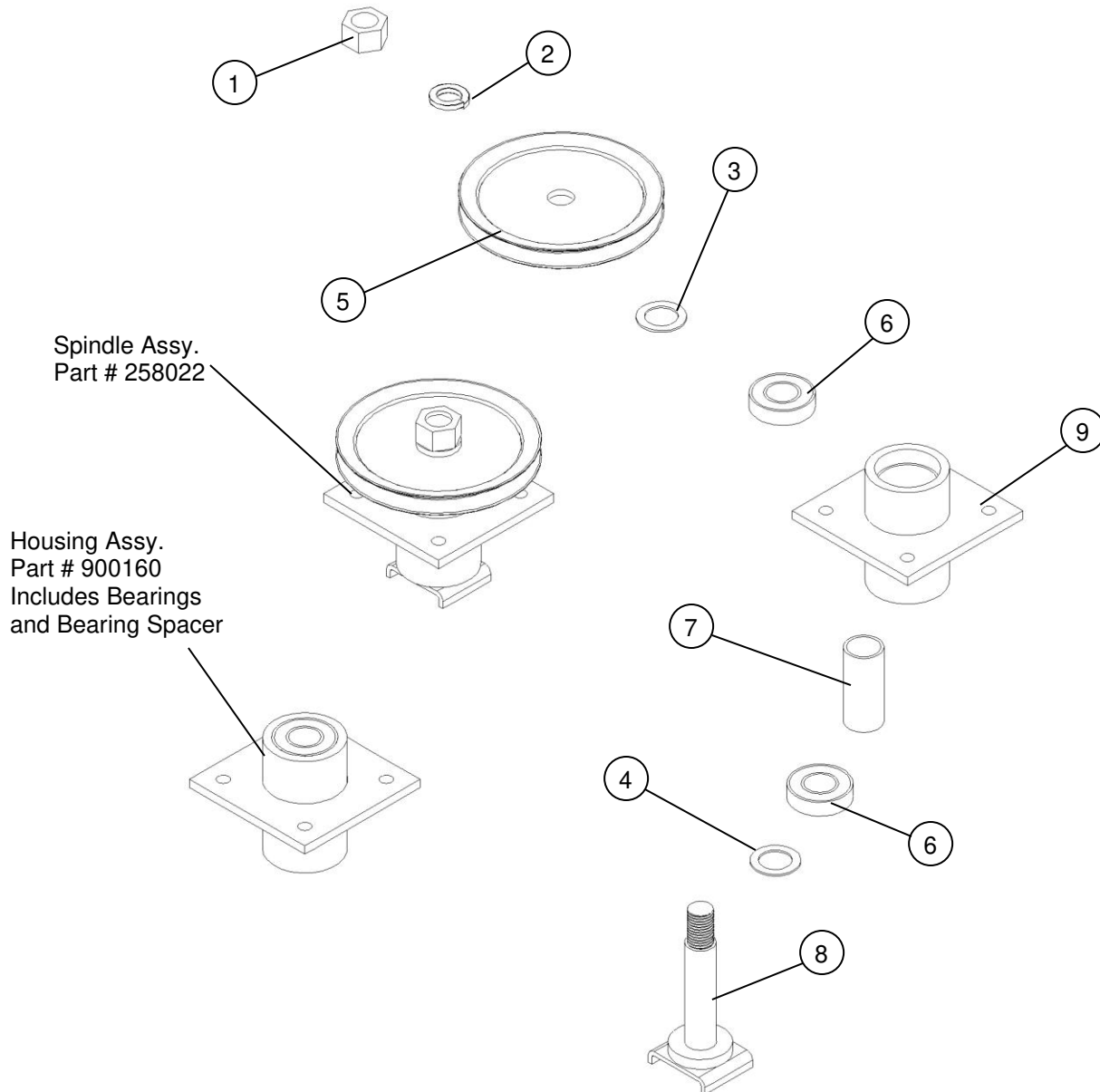


<u>Item</u>	<u>Part #</u>	<u>Description</u>	<u>Qty.</u>
1	212009	Std. Hex Nut 1.00" - 14NF	2
2	214013	Split Lock Washer 1.00"	2
3	214023	Machinery Washer 1.25" I.D. x 14 GA Thick	4
4	241008	"V" Sheave 7-1/2" Dia. - 25 mm Bore	2
5	243006	Bearing 6206 - 2RST	4
6	600158	Bearing Spacer	2
7	600159	Pulley Spacer	2
8	900074	Spindle Hub (Not Sold Separately, Purchase 900078)	~
9	900075	Spindle Shaft	2
	900078	Replacement Housing Assy.	2
	258015	Replacement Spindle Assy.	2

PARTS BREAKDOWN FOR ROUGH CUT SPINDLE ASSY.

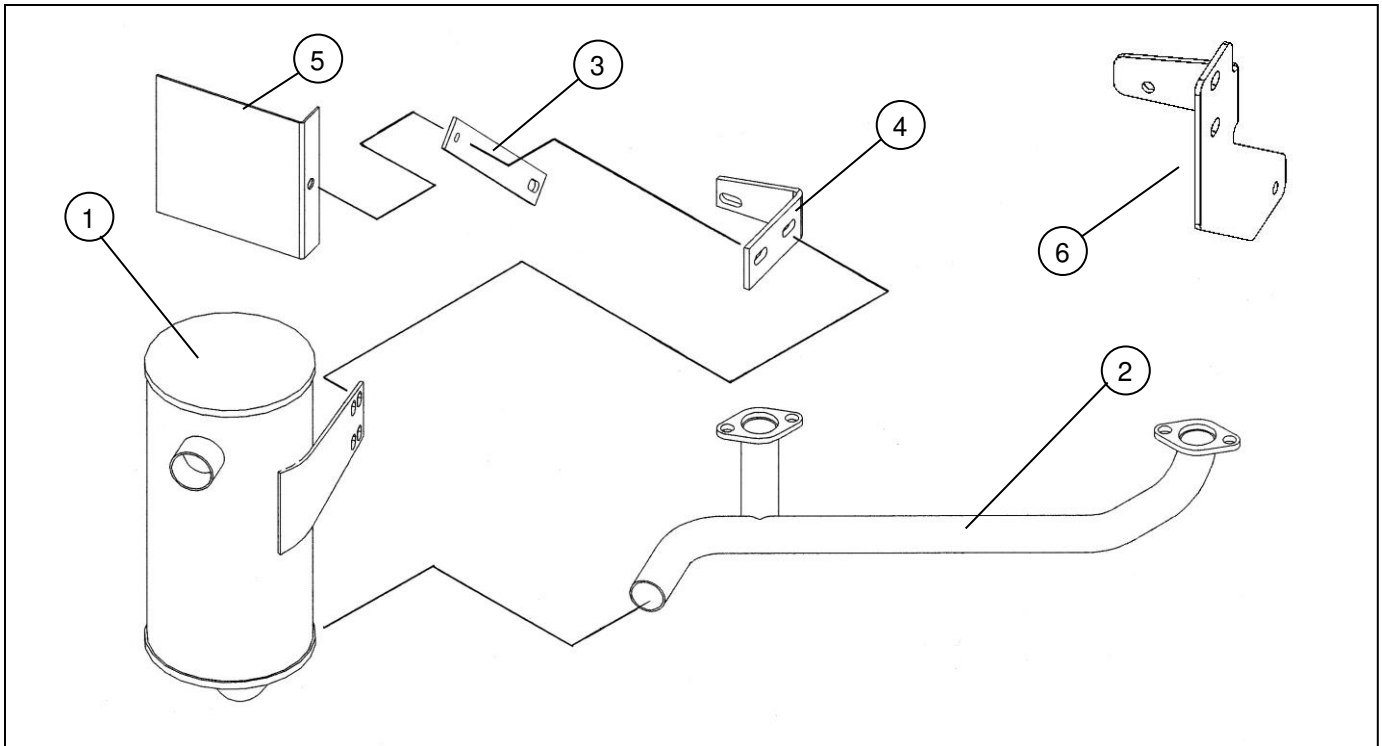
(PART # 258022)

Note: Models with serial #'s ranging from (ignore the first two digits) xx00119 to xx07324 were originally built with Spindle Assy. Part # 258015. Models with serial #'s ranging from (ignore the first two digits) xx08001 and greater were built with Spindle Assy. Part # 258022.



<u>Item</u>	<u>Part #</u>	<u>Description</u>	<u>Qty.</u>
1	212009	Std. Hex Nut 1.00" - 14NF	2
2	214013	Split Lock Washer 1.00"	2
3	214014	Machinery Washer 1.00" I.D. x 18 GA Thick	2
4	214023	Machinery Washer 1.25" I.D. x 14 GA Thick	2
5	241008	"V" Sheave 7-1/2" Dia. - 25 mm Bore	2
6	243006	Bearing 6206 - 2RST	4
7	600271	Bearing Spacer	2
8	900075	Spindle Shaft	2
9	900159	Spindle Hub (Not Sold Separately, Purchase 900160)	~
	900160	Replacement Housing Assy.	2
	258022	Replacement Spindle Assy.	2

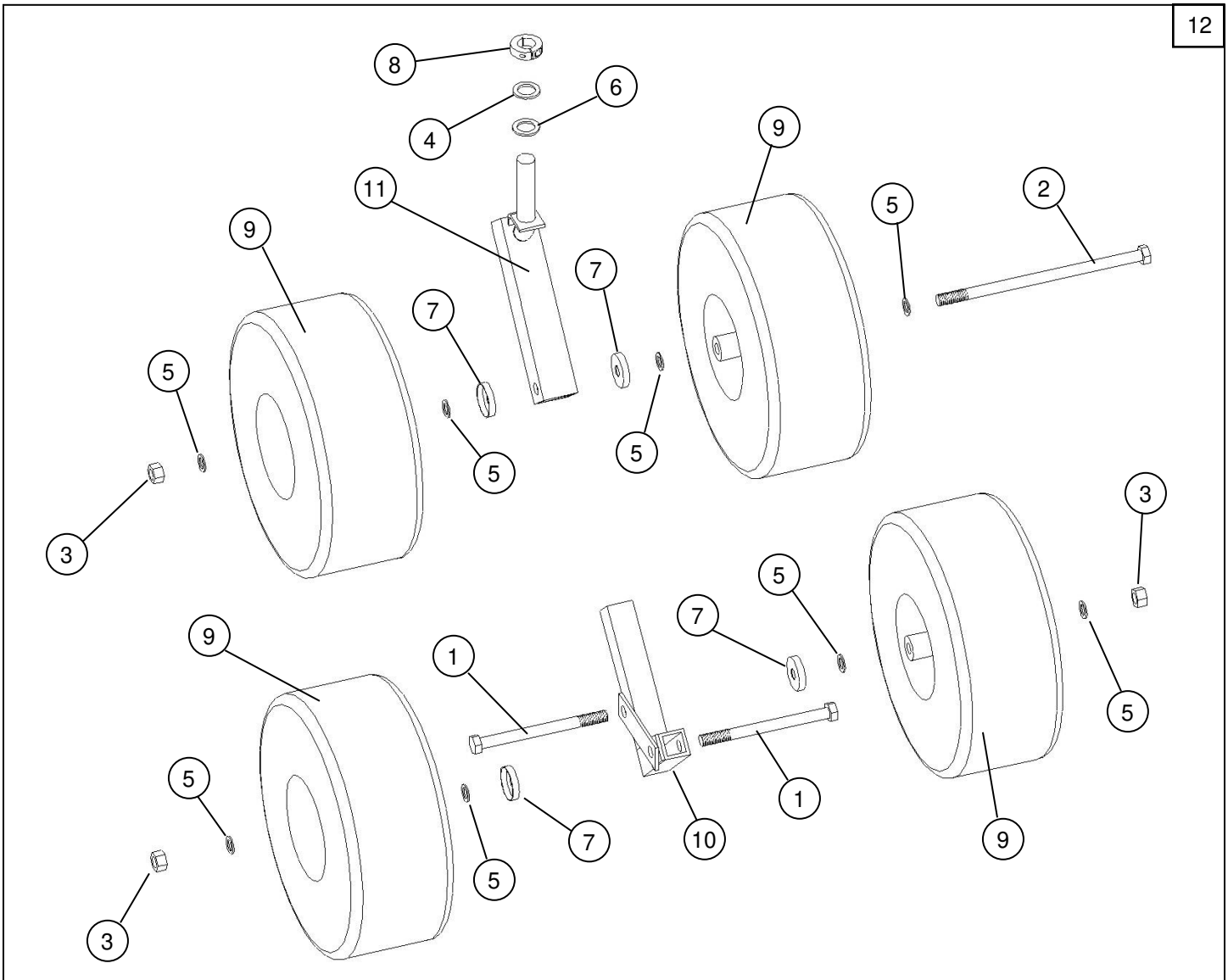
MR55B EXHAUST PARTS – 22HP BRIGGS INTEK & 23HP BRIGGS INTEK, PROFESSIONAL & COMMERCIAL TURF



<u>Item</u>	<u>Part #</u>	<u>Description</u>	<u>Qty.</u>
1	257505	Muffler - 5" (<i>See Note Below</i>)	1
2	257506	Manifold	1
3	600231	Exhaust Brace (Can be upgrded to 600313)	1
4	600232	Exhaust Support (Can be upgraded to 600313)	1
5	600233	Heat Deflector (Only Used on 22HP Models with the Fuel Pump Behind Muffler)	1
6	600313	Muffler Bracket (Replaces both 600231 & 600232 with single piece)	1

Note: When ordering Muffler 257505 please indicate if your engine has the fuel pump located behind the muffler. These mufflers require a notch added to the mounting bracket. This only applies to certain 22HP models.

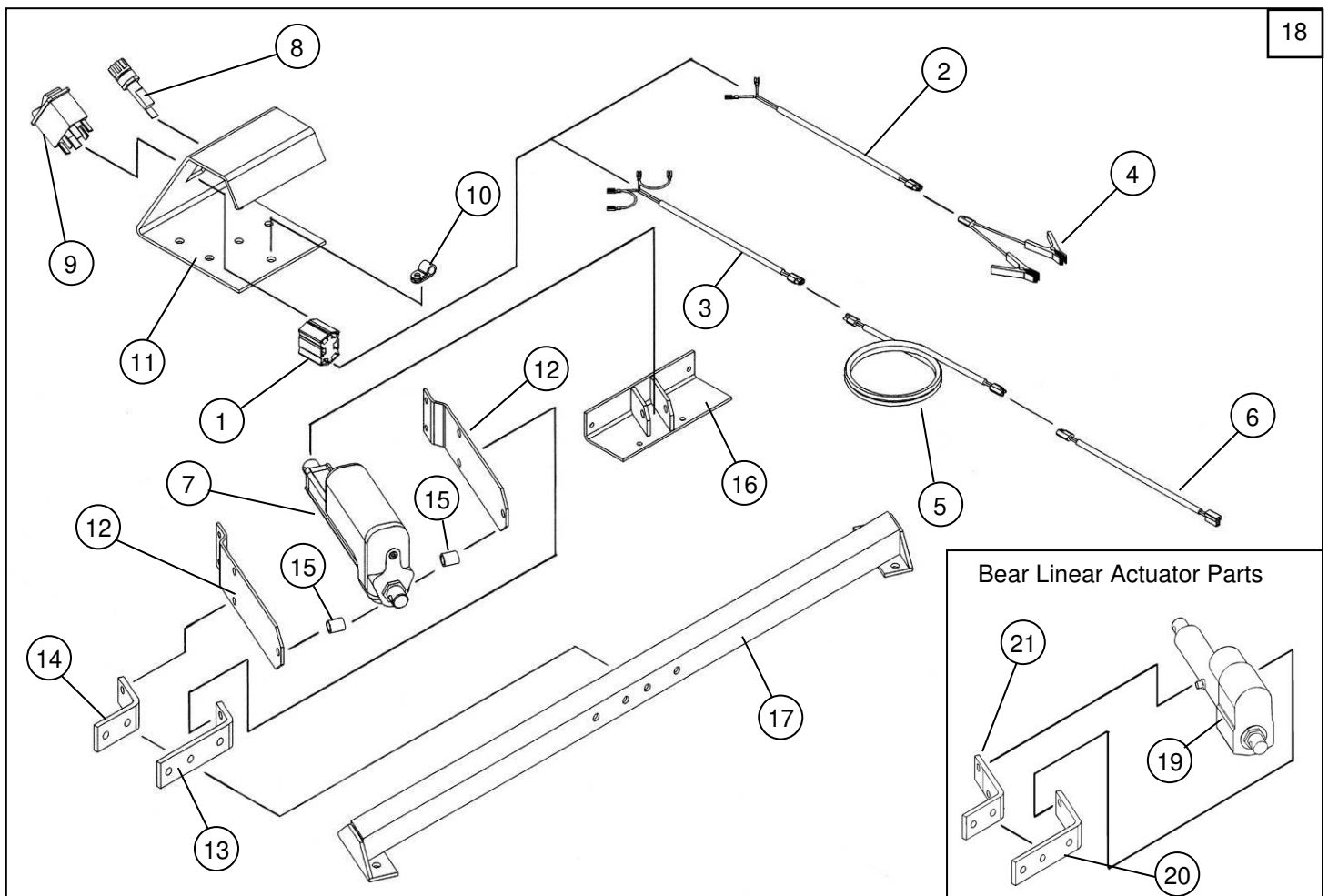
OPTIONAL WETLANDS KIT - (PART # 003905)



12

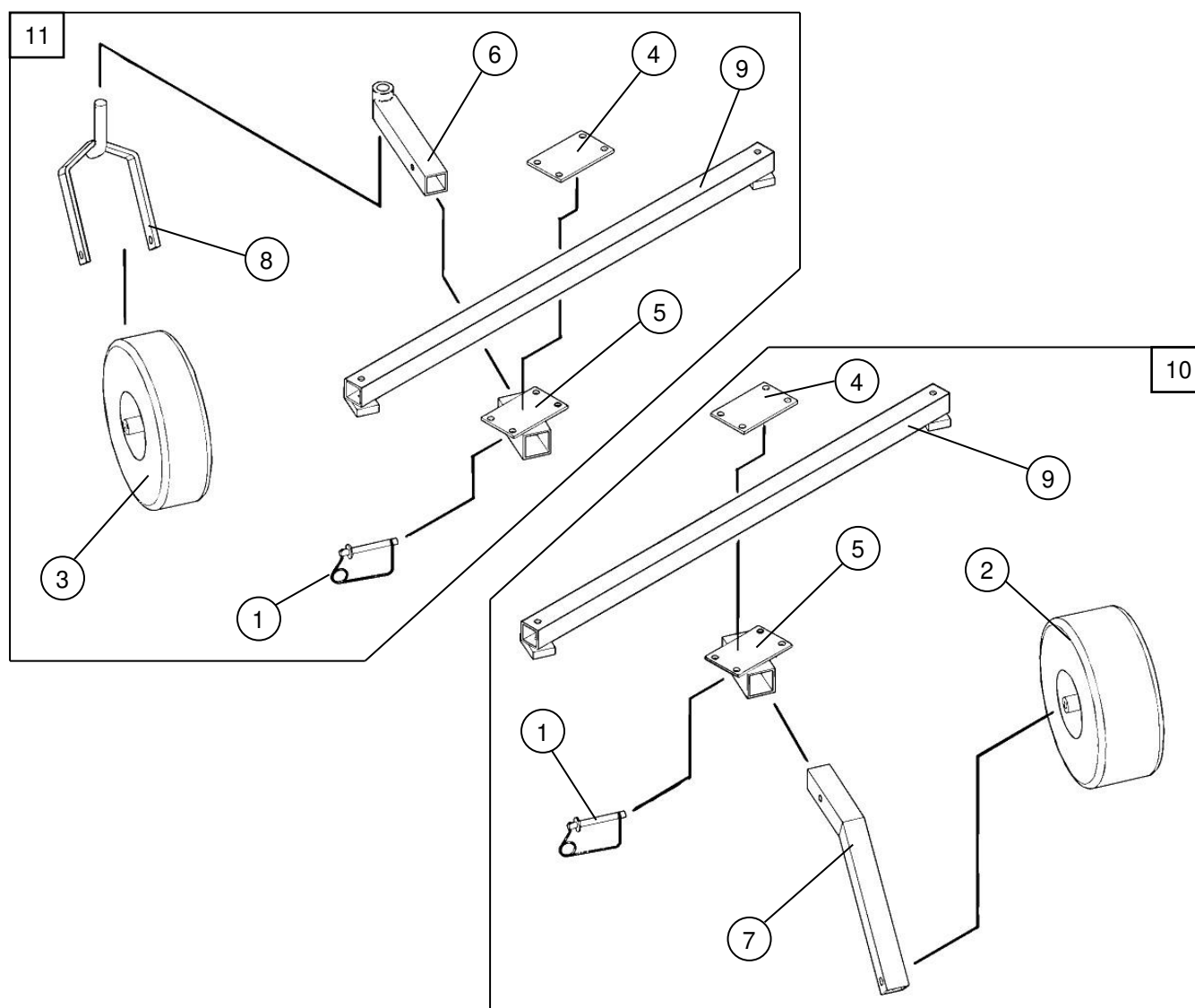
<u>Item</u>	<u>Part #</u>	<u>Description</u>	<u>Qty.</u>
1	202140	Hex Head Bolt 5/8" x 7.5"	2
2	202142	Hex Head Bolt 5/8" x 12.0"	3
3	212015	Centered Lock Nut 5/8"	5
4	214014	Machinery Washer 1" I.D. x 1.5" O.D. x 18 GA	2
5	214018	Machinery Washer 5/8" I.D. x 1" O.D.	16
6	214019	Machinery Washer 1" I.D. x 1.5" O.D. x 10GA	2
7	214021	Cup Washer	8
8	222012	Single Split Collar 1" I.D. x 1/2" Thick	2
9	226003	Offset Wheel Assy. (15/600 x 6, 4 Ply Turf) <i>(See Wheel Assy. Drawing Above)</i>	~
10	900091	Rear Tire Extension	1
11	900149	Caster	2
12	003905	Wetlands Kit	1

OPTIONAL ELECTRIC LIFT KIT - (PART # 003909)



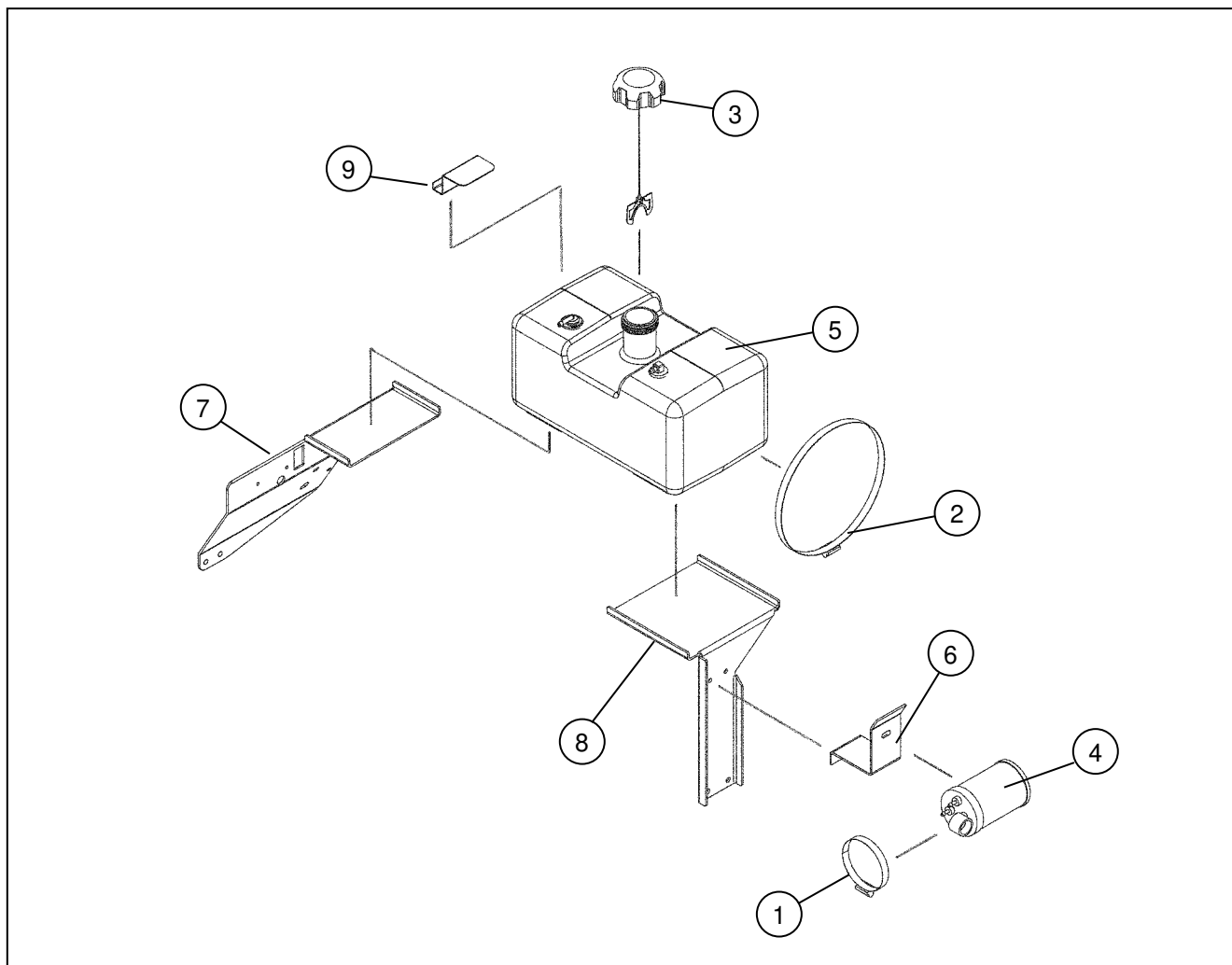
Item	Part #	Description	Qty.
1	235061	Six Contact Socket Connector	1
2	235063	Battery Wiring Harness	1
3	235065	Wiring Harness	1
4	235066	Battery Clip Harness	1
5	235067	Extension Cable	1
6	235070	Actuator Wiring Harness Assy.	1
7	237003	Electric Linear Actuator (8" Stroke) (Linak Brand)	1
8	264006	Fuse Holder	1
	264009	Fuse (30 Amp)	1
9	264008	Rocker Switch	1
10	277030	Fixed Diameter Cable Clamp	2
11	500010	Control Panel	1
	275020	Lift Control Decal	1
12	600238	Actuator Bracket (For Linak Brand)	2
13	600239	Top Long Support (For Linak Brand)	1
14	600240	Top Short Support (For Linak Brand)	1
15	600269	Actuator Bracket Spacer (For Linak Brand)	2
16	900092	Lower Actuator Mount	1
17	900093	Upper Actuator Mount	2
18	003909	Electric Lift Kit (For 57" Rough Cut Models)	1
19	237000	Electric Linear Actuator (8" Stroke) (Bear Linear Brand)	~
		Replace Bear Linear Actuator with Items 7, 12, 13, 14 & 15	~
20	600185	Top Long Support (For Bear Linear Brand)	1
21	600186	Top Short Support (For Bear Linear Brand)	1

OPTIONAL FLOATATION KIT PARTS (PART #'s 003907, 003908 & 900113)



<u>Item</u>	<u>Part #</u>	<u>Description</u>	<u>Qty.</u>
1	216011	Wire Lock Pin (1/2" x 3-1/2" Opening)	2
2	226012	Offset Wheel Assy. (15/600 x 6, 4 Ply Turf) <i>(See Wheel Assy. Drawing Above)</i>	~
3	226013	Centered Wheel Assy. (5.30/4.50 x 6, 4 Ply Stud) <i>(See Wheel Assy. Drawing Above)</i>	~
4	600195	Clamping Flat	2
5	900107	Receiver Assy.	2
6	900108	Caster Support	1
	243010	Plastic Bearing (1-3/8" O.D. x 1.00" I.D., Flange, Nylon)	2
7	900109	Rear Wheel Support	1
8	900148	Caster Fork (Includes 1" Washers) (Replaces Caster Fork 900073, Also Requires 222012)	1
	222012	Single Split Collar (1" I.D. x .1/2" Thick)	2
9	900113	Cross Brace Tube Assy. (900110 with Mounting Bolts)	2
10	003907	Rear Floatation Kit (Does Not Include 900113, Purchase Separately)	1
11	003908	Front Floatation Kit (Does Not Include 900113, Purchase Separately)	1

CALIFORNIA EPA (CARB) PARTS LIST **(MODEL YEAR 2020 AND NEWER)**



<u>Item</u>	<u>Part #</u>	<u>Description</u>	<u>Quantity</u>
1	222014	Worm Drive Hose Clamp (2-5/16" to 3-1/4" Clamping Dia.)	1
2	222016	Worm Drive Hose Clamp (9-1/4" to 10-1/8" Clamping Dia.)	2
3	277035	Gas Cap - Audible Click/Tethered, Non-Venting	1
4	277036	Carbon Canister - 300cc	1
5	277045	Fuel Tank Assy., 3 Gal., EPA/CARB Certified	1
6	600291	Canister Support	1
7	600317	Control Panel	1
8	600318	Tank Support	1
9	600319	Roll-Over Valve Shield	1

MISCELLANEOUS PARTS

AIR FILTERS, OIL FILTERS, BATTERY ETC.

<u>Part #</u>	<u>Description</u>	<u>Qty.</u>
226014	Flatproof Wheel Assy. (15/600 x 6 - Urethane Foam)(Optional Replacement for 226003 & 226012)	2
226015	Flatproof Wheel Assy. (5.30/4.50 x 6 - Urethane Foam)(Optional Replacement for 226004 & 226013)	2
257500	Oil Filter, Kohler (12-050-01-S) - Used on 20HP Kohler Command Engines - Replace with 257503	~
257502	Air Filter (Includes Foam Pre-Cleaner), Kohler (47-883-03-S1) - Used on 20HP Kohler Command Engines	1
257503	Oil Filter, Kohler (52-050-02-S)	1
257513	Air Filter (Filter Only Use 257514 Also), Briggs (795115) - Used on 17.5HP Briggs Intek Engines	1
257514	Pre-Cleaner (Use With 257513 Air Filter), Briggs (697015) - Used on 17.5HP Briggs Intek Engines	1
257515	Air Filter (Round Canister), Briggs (594201 was 591334) - Used on 19.5HP & 23HP Briggs Intek Engines Note: On 23HP Briggs Intek Models with a Flat Cartridge Style Air Filter Order Part #257519 & 257520	1
257516	Oil Filter, Briggs (696854, Higher Grade Yellow) - All Briggs Models With Oil Filter	1
257519	Air Filter (Flat Cartridge Style) (Filter Only Use 257520 Also), Briggs (499486S) - 22 & 23HP Briggs Intek Eng. Note: On 23HP Briggs Intek Models with a Round Canister Style Air Filter Order Part #257515	1
257520	Pre-Cleaner (Flat Cartridge Style) (Use With 257519 Air Filter), Briggs (273638S) - 22 & 23HP Briggs Intek Eng. Note: On 23HP Briggs Intek Models with a Round Canister Style Air Filter Order Part #257515	1
257521	Air Filter (Filter Only Use 257522 Also), Honda (17210-ZJ1-842) - Used on 18HP Honda Engines	1
257522	Pre-Cleaner (Use With 257521 Air Filter), Honda (17218-ZJ1-840) - Used on 18HP Honda Engines	1
257526	Oil Filter, Tecumseh (36563) - Used on 17HP Tecumseh Enduro Engines	1
257527	Air Filter (Filter Only Use 257528 Also), Tecumseh (36356) - Used on 17HP Tecumseh Enduro Engines	1
257528	Pre-Cleaner (Use With 257527 Air Filter), Tecumseh (36357) - Used on 17HP Tecumseh Enduro Engines	1
257529	Air Filter & Pre-Cleaner, Briggs (792105) - Used on 23HP Briggs Professional Engines	1
257530	Air Filter (Filter Only Use 257531 Also), Briggs (793569) - Used on 19HP Briggs Professional Engines	1
257531	Pre-Cleaner (Use With 257530 Air Filter), Briggs (793685) - Used on 19HP Briggs Professional Engines	1
257533	Air Filter (Filter Only Use 257536 Also), Briggs (798897) - Used on 23HP Briggs Commercial Turf Engines	1
257536	Pre-Cleaner (Use With 257533 Air Filter), Briggs 593217) - Used on 23HP Briggs Commercial Turf Engines	1
257539	Fuel Filter, Briggs (845125)	1
257540	Spark Plug, Briggs (491055S)	1 or 2
264003	Hour/Tach Meter (Digital)	1
264004	Battery (12V AGM Sealed)	1
277025	Tire Sealer - 32 oz Bottle (Each Tire Requires 16 oz)	2
277042	Spare Key for Indak Ignition Switches (Used on 264001 & 264010)	1

Note: Call for Air Filter, Pre-Cleaner and Oil Filter information for any engines not shown above.